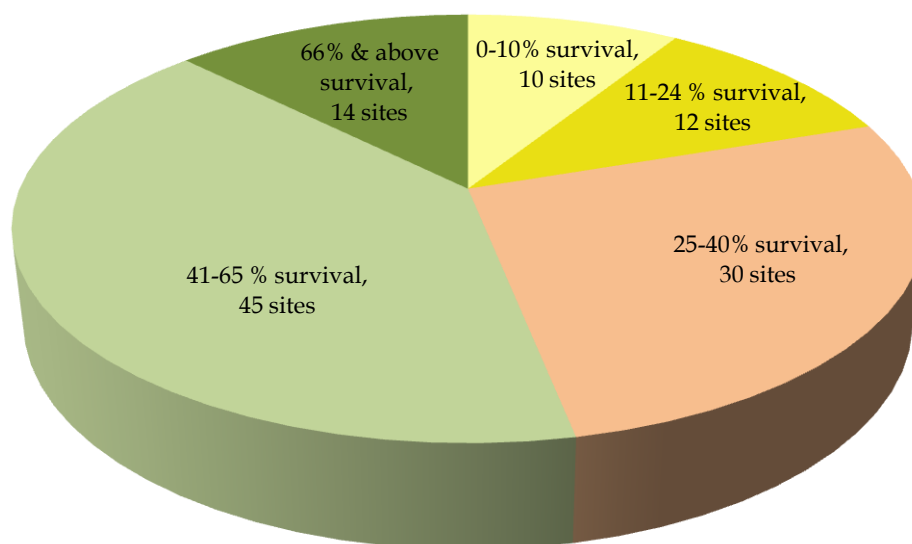


## Evaluation of 2011 Rains Plantation-Evaluation Report No. 474

### Circle wise Survival Percent of Evaluated Plantations

Circle	Total Sites evaluated	No. of sites				
		0-10%	11-24 %	25-40%	41-65%	66% & above
<b>1</b>	<b>2</b>	<b>3</b>	<b>4</b>	<b>5</b>	<b>6</b>	<b>7</b>
Nagpur	16	1	1	5	7	2
Chandrapur	7	-	-	1	3	2
Gadchiroli	10	2	-	3	4	1
Yavatmal	12	2	5	4	1	-
Amravati	10	2	1	-	6	1
Aurangabad	10	1	1	3	3	2
Dhule	10	-	-	4	6	-
Nashik	5	1	1		3	1
Thane	12	-	-	4	7	1
Pune	7	1	2	3	1	-
Kolhapur	12	-	1	3	4	4
<b>Total</b>	<b>111</b>	<b>10</b>	<b>12</b>	<b>30</b>	<b>45</b>	<b>14</b>
<b>Percent to the total sites</b>		<b>9%</b>	<b>11%</b>	<b>27%</b>	<b>40%</b>	<b>13%</b>



### No. of sites with less or more than 40% survival

